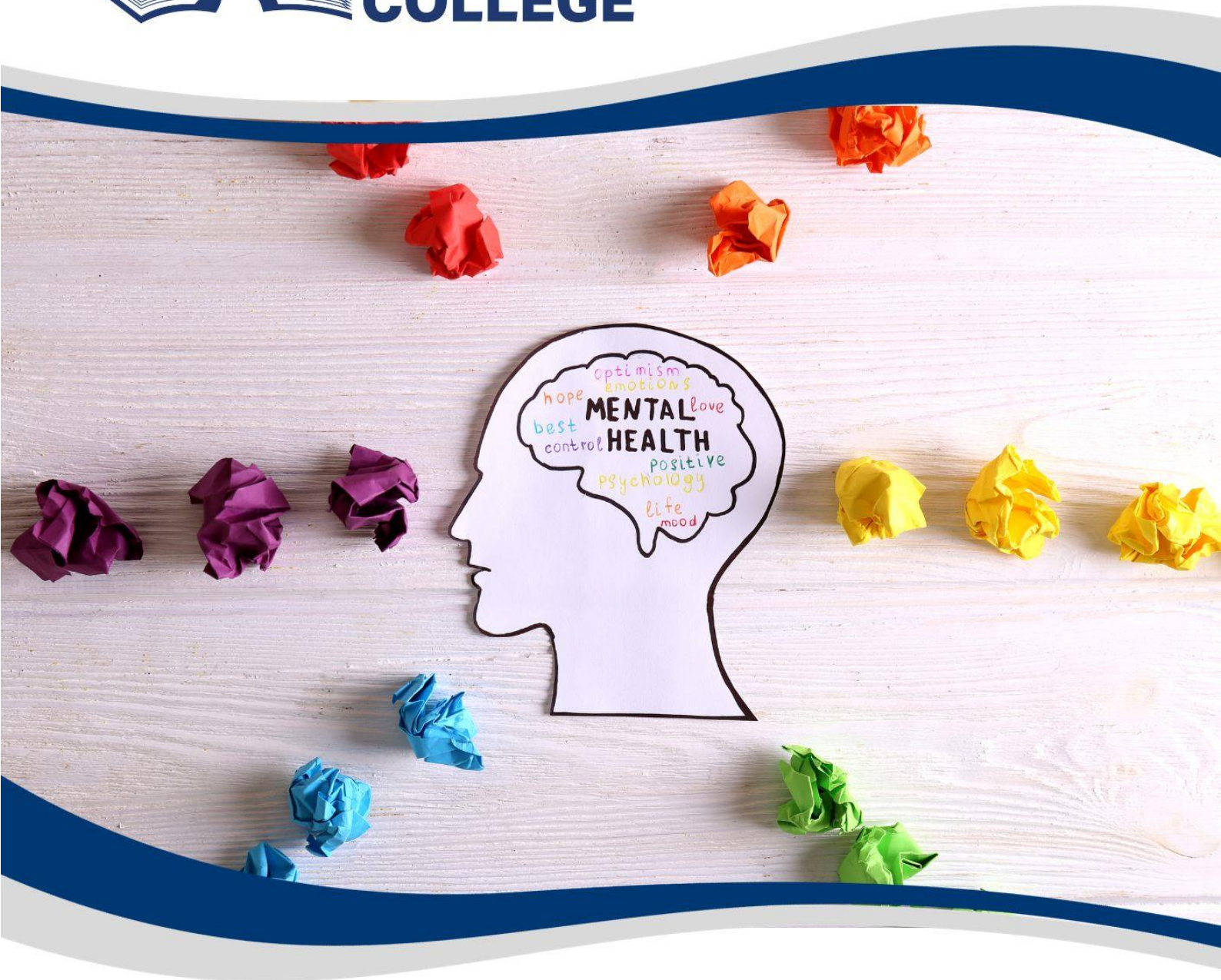




BAIRNSDALE
**CHRISTIAN
COLLEGE**



Mental Health Practitioner Application Pack



BAIRNSDALE CHRISTIAN COLLEGE

03 5153 0079 

admin@bccs.vic.edu.au 

www.bccs.vic.edu.au 

Dear Applicant,

Thank you for considering the position of Mental Health Practitioner here at Bairnsdale Christian College. We genuinely appreciate your interest in being part of BCC.

Before finalising your application, we encourage you to read through the following information which outlines our College values, culture and the specific position details. This information will assist your decision-making process as you consider your application.

Should you require additional information regarding the College or the application process, please do not hesitate to contact our amazing Administration team on (03) 5153 0079 or by emailing admin@bccs.vic.edu.au.

May God bless you as you seek His will and His direction. We look forward to receiving your application.

Blessings,

Mr Brett Maxwell
Acting Principal



Our Purpose

Bairnsdale Christian Community School Inc. (better known as Bairnsdale Christian College, or BCC) is a small, rural, non-denominational Christian School that has been successfully serving families in Bairnsdale and East Gippsland region since 1998, with an education based on a distinctive Biblical world view and life skills infused with Christian values. Bairnsdale Christian College is dedicated to teaching students within a loving and caring environment. Our teaching method is grounded within a Biblical context, leaning on teaching and wisdom from the Christian worldview.

Mission

Bairnsdale Christian College partners with families to provide education that equips students to serve God effectively in a complex world.

Vision

Our vision is to graduate young people of enduring Christian character who will influence their world.

Values

Love - The love of God, people and the environment is demonstrated in the choice to value each individual; being supportive and encouraging of others' and placing their needs above one's own.

Wisdom - The ability to discern and interpret life from a Biblical perspective, to pursue their personal best, develop Godly character and value others' ideas.

Integrity - Honouring the Godly principles of honesty, dependability, personal responsibility and developing strong morals.



**BAIRNSDALE
CHRISTIAN
COLLEGE**

03 5153 0079 

admin@bccs.vic.edu.au 

www.bccs.vic.edu.au 

Mental Health Practitioner (MHP) - Position Description

This person reports directly to the Wellbeing and Inclusion Manager and is a member of the Wellbeing Team. The MHP provides direct support and early intervention services for individual and groups of students who may be at risk of or experiencing mental health challenges, coordinates internal and external supports and enhances promotion and prevention activities within the College by contributing to whole college wellbeing plans.

This position is currently 2-days per week with the possibility of extension as the college grows.

EXPERIENCE

Desirable

- For Mental Health Nurse applicants, hold a Mental Health Nurse Credential and membership with the Australian College of Mental Health Nurses
- For Social Work applicants, hold membership with the Australian Association of Social Workers and an Accredited Social Worker trademark.
- For Psychology applicants, specialisation in education and/or developmental psychology

RESPONSIBILITIES

- Deliver professional support service/s in the college, including the direct counselling for students with a range of mental health issues, applying sound theoretical knowledge and practical expertise.
- Plan and implement evidence-based intervention strategies (including behaviour support plans) for students with complex needs including collaborating with families, other professionals, and agencies when appropriate, and manage the associated risks.
- Work collaboratively with the school to contribute to policies and operational practices that will guide the work of others, including other school wellbeing staff and teachers.
- Provide leadership and professional learning to others, such as teachers and other school wellbeing staff, to build the capacity of schools to improve students' learning and developmental outcomes.
- Liaise with other BCC staff (including teachers and Student Support Services staff) and external service providers where necessary to provide support to students.
- Maintain professional competence and continued professional learning, including attending professional development activities throughout the year.
- Meet relevant policies and legislative requirements in relation to student health information privacy.

SELECTION CRITERIA

1. Demonstrated experience in assessing, conceptualising, and analysing wellbeing issues, and providing evidence-based direct counselling for a range of mental health issues.
2. Demonstrated experience in planning and implementing evidence-based intervention strategies for clients with complex needs.
3. Demonstrated ability to input into the development, implementation and evaluation of policies and strategies relating to mental health and wellbeing.
4. A team player with well-developed organisational, analytical, time management and problem-solving skills.
5. Highly developed communication, networking and interpersonal skills including the ability to liaise effectively with a wide range of people.
6. Ability to provide professional learning that informs and influences the work of the other involved in the engagement and wellbeing of children and young people.
7. Ability to deliver support and services through a Christian worldview lens.
8. Clear understanding of legislative requirements regarding privacy of health information and mandatory reporting.

OCCUPATIONAL HEALTH & SAFETY

- Support management and colleagues in performing their roles in relation to health and safety matters.
- Contribute to maintaining a safe workplace in accordance with college safety policies and systems.

CHILD SAFETY

- Be familiar with and promote familiarity with the College child safe policy.
- Be familiar with and promote familiarity with the points that establish the College's expectations for appropriate behaviour with children.
- Take part in screening, supervision, training, and other human resources practices that reduce the risk of child abuse by new and existing personnel or volunteers.
- Be familiar with and promote familiarity with processes for responding to and reporting suspected child abuse.
- Always work to identify and reduce or remove risks of child abuse.
- Always work towards appropriate participation and empowerment of children.

PERSONAL QUALITIES

- Hold a Christian faith consistent with biblical values, the College Statement of Faith, Vision, Mission, Values and Code of Conduct.
- Have a sense of calling from God to serve Him at BCC.



BAIRNSDALE CHRISTIAN COLLEGE

03 5153 0079 

admin@bccs.vic.edu.au 

www.bccs.vic.edu.au 

Staff Application Form

Position applying for: Mental Health Practitioner

PERSONAL INFORMATION

Full Name:

Address:

Email:

Mobile:

How did you hear about this position?:

PRE-EMPLOYMENT CRITERIA

WWCC number & expiry:

Employee

Volunteer

VIT number (teaching positions ONLY):

Full

Provisional

CHRISTIAN WORLDVIEW

Describe your Christian journey and how it has brought you to apply for this role:

REFERENCES

Name:	Position:
Organisation:	
Email:	Mobile:

Name:	Position:
Organisation:	
Email:	Mobile:

STATEMENT OF FAITH

Bairnsdale Christian College believes in having Christ at the centre, holding all we do together and giving it purpose and reason. Our Christian culture is captured in our stories, our interactions, processes, mission, and values. Our curriculum is shaped from an understanding that this is all part of God's bigger narrative. We are revealing God in the story and showing how He shapes and guides the world we live in.

- We believe the Bible to be the inspired, the only infallible, authoritative Word of God.
- We believe that there is one God, eternally existent in three persons: Father, Son, and the Holy Spirit.
- We believe in the deity of our Lord Jesus Christ, in His virgin birth, in His sinless life, in His miracles, in His vicarious and atoning death through His shed blood, in His bodily resurrection, in His ascension to the right hand of the Father, and in His personal return in power and glory.
- We believe that for the salvation of lost and sinful man, regeneration of the Holy Spirit is essential.
- We believe in the present ministry of the Holy Spirit by whose indwelling the Christian is enabled to live a godly life.
- We believe in the resurrection of both the saved and the lost; they that are saved unto the resurrection of life and they that are lost unto the resurrection of damnation.
- We believe in the spiritual unity of believers in our Lord Jesus Christ.

Please sign:

On the basis of the information provided above, I hereby apply for a Non-Teaching position. I am in full agreement with the Statement of Faith as set out.

Applicants Signature and Date:

SUPPORTING DOCUMENTATION

- Cover letter outlining your suitability for the role and contribution you can make to our College culture
- Curriculum vitae
- Response to selection criteria
- Tertiary institution results transcripts, degrees, diplomas, other professional qualifications
- Further study certificates/papers showing qualifications eg. First aid, food handling, lifesaving
- Copy of photo ID (driver's license, WWCC)

DECLARATIONS

I declare that all the information given in and provided with this application is true and complete to the best of my knowledge.

Applicants Signature and Date: